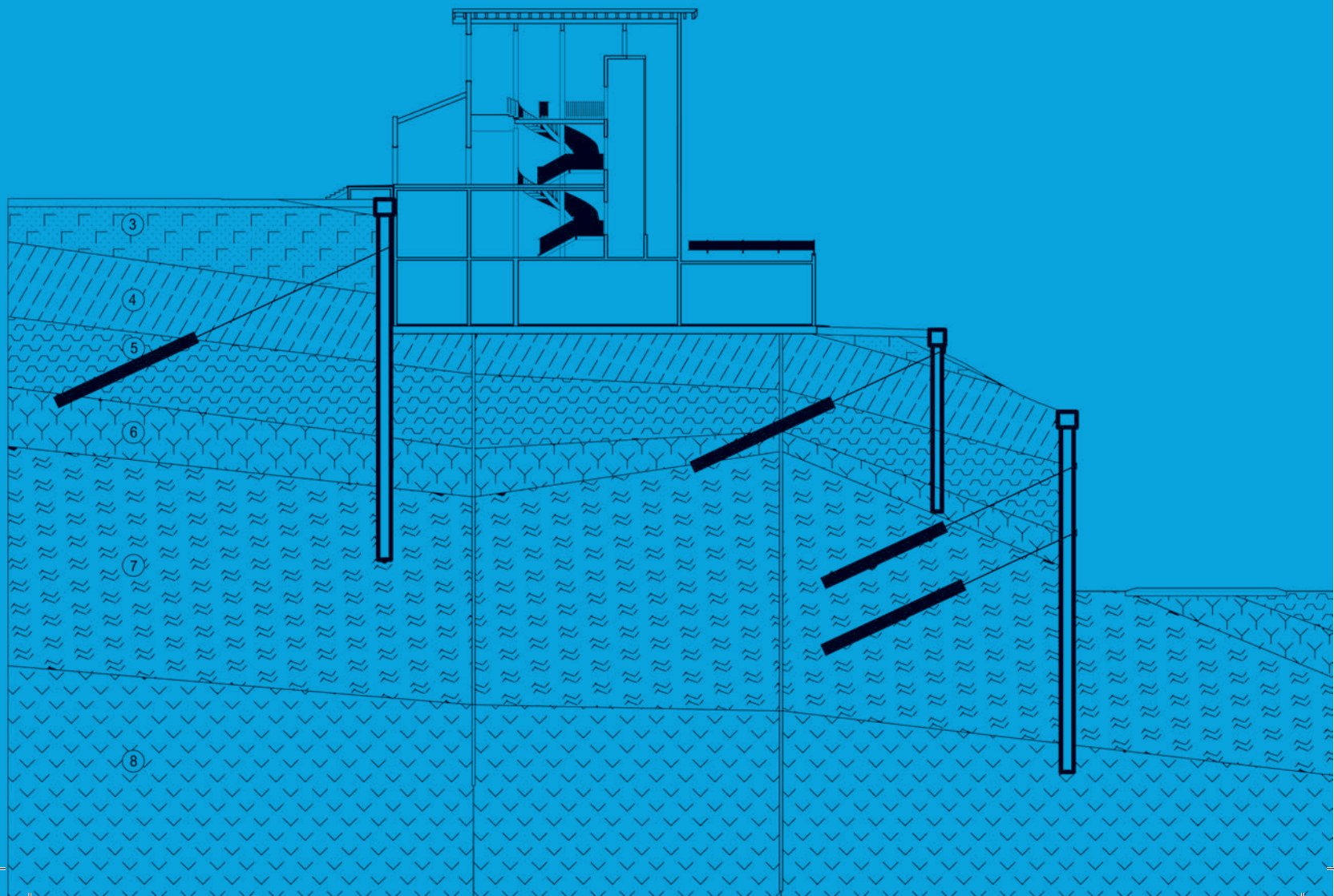




**GEOIZOL**  
project





Barentsburg (Norway)

ZATO Aleksandrovsk

Kirovsk

Sig station,  
Oktyabrskaya railway

Arkhangelsk

Svetlogorsk  
Pionersky

Vyborg

St. Petersburg

highway Moscow – St. Petersburg, M-11

Minsk

Smolensk

Dzerzhinsk station,  
Seima station,  
Gorkovskaya railway

Moscow

Cheptsa village,  
Sverdlovsk railway

Subbotniki village,  
Perm Territory

Lipetsk

Voronezh

Penza

Uspenskaya station,  
North Caucasian railway

Rostov-on-Don

Sevastopol

Anapa

Gelendzhik

Krasnodar

Sochi

Stavropol

Mineralnye  
Vody

Mozdok

Grozny



Dehkanabat village,  
Uzbekistan

## THE COMPANY TODAY

The company GEOIZOL Project (part of the Group of Companies GEOIZOL) was formed on the basis of the design department and grew into a separate enterprise in 2009.

The purpose of creating a new business unit was the need to execute high-quality project documentation capable of creating and transmitting to the world unique design solutions, as well as organically combine the innovative opportunities of the holding's resources.

The exclusivity of the projects and the accumulated experience of GEOIZOL Project have become a powerful resource. It has played an important role in expanding of the influence area of the Group of Companies in the construction market in the field of geotechnics.

Today the company GEOIZOL Project is a friendly creative team of about 50 people, 35 of them are high-class specialists in the field of solving technical problems of any complexity in the following areas: engineering protection of the territory, geotechnics and underground structures, including parking lots and various types of foundations.

A stylized map of the Far East region of Russia, showing the coastline and major islands. A blue circle highlights the area around the cities of Yuzhno-Sakhalinsk and Vladivostok. The map is oriented with North at the top.

Yuzhno-Sakhalinsk

Vladivostok





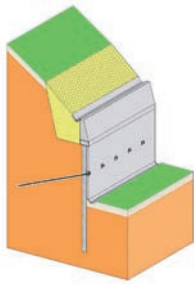
## PROJECTS OF ENGINEERING PROTECTION OF THE TERRITORY

The specialists of the company GEOIZOL Project have a rich experience in the development of projects of measures for engineering protection of the territory, preventing the formation and development of hazardous natural processes, such as: landslides, soil erosion, karsts, weak and specific soils, mudflows, rock falls, thawing of permafrost soils, snow avalanches, erosion of coastal zones of settlements and enterprises.

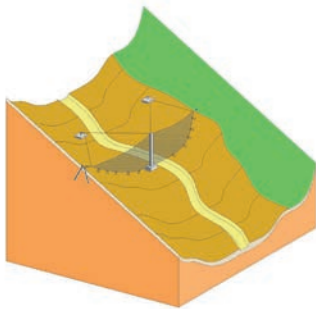
Today engineering protection facilities have been completed and placed in operation in such areas as: railways and highways, sports infrastructure, chemical and mining industries, power generation, shipbuilding and port facilities. The uniqueness of the solutions and an individual approach to each object is due, among other things, to the diversity of natural and climatic conditions of the location of each of them: highlands, coastal zones of rivers and seas, regions of the Far North and equated to them, swampy areas.

The company's key customers in this area are Gazprom Sotsinvest, Russian Railways, Kubanenergo, Kolskaya Shipyard, Dekhka-Nabad Potash Fertilizer Plant, Novolipetsk Metallurgical Plant.

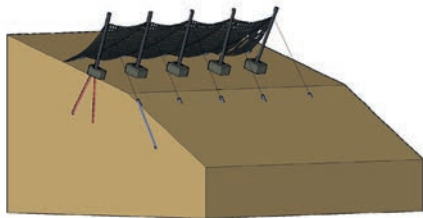




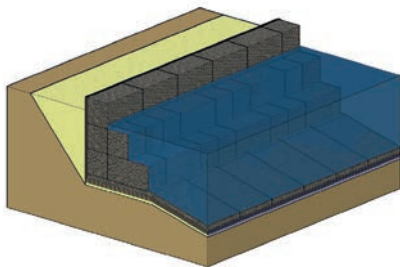
*Anti-landslide protection*



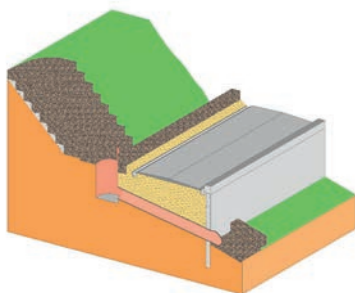
*Mudflow barrier*



*Avalanche protection*



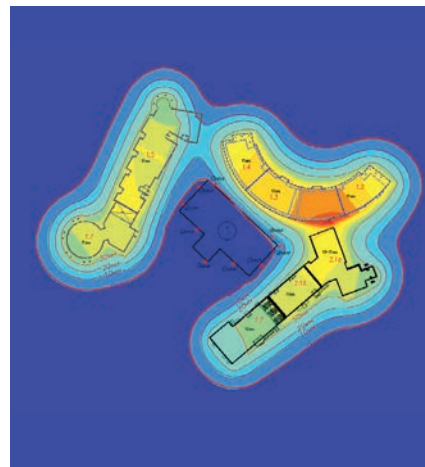
*Strengthening the coast*



*Culvert*





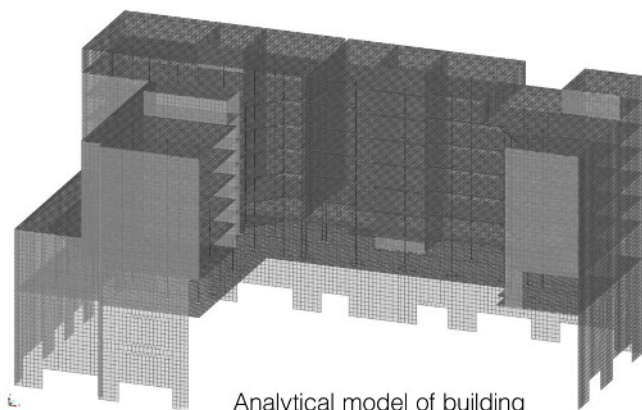


*Construction of a complex of residential buildings Premier Palace. St. Petersburg, Pionerskaya st., 50*

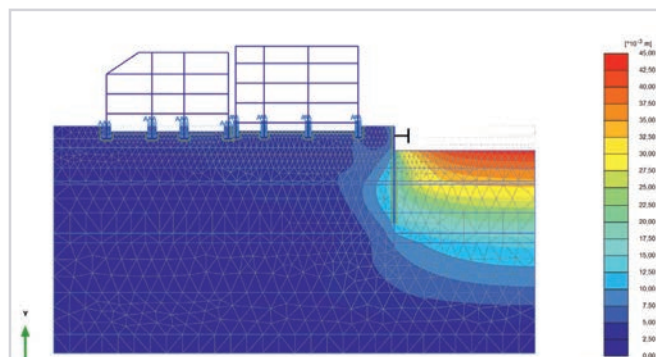
## GEOTECHNICAL JUSTIFICATION, GEOTECHNICAL CALCULATIONS

During the construction of buildings and structures, the underground part of which is buried by more than 5 m, and also in conditions of dense development and at risk of the development of hazardous engineering and geological processes, specialists of the GEOIZOL Project company execute modeling of the impact of the designed object on the surrounding development and develop recommendations for minimizing damage.

The company's key customers in this area are Adamant, LSR Group, Setl City, YIT, and Pioneer.



Analytical model of building



*Regeneration of capital construction objects for a residential complex with built-in non-residential premises with the reconstruction of an apartment building for the building of engineering support of the complex. St. Petersburg, nab. Lieutenant Schmidt, 21, lit. A*





*Elite complex of residential and office buildings with a three-storey underground parking. The project using the technology of construction of the underground part of the structure (depth - about 11 m) according to the top-down principle. St. Petersburg, Zoologicheskoy per., 2-4*

## PARKING PROJECTS, ENCLOSING STRUCTURES OF FOUNDATION PITS

In the dense development of large cities, the use of underground space for parking is of particular importance. Taking into account the difficult soil conditions in St. Petersburg, which entail the lack of the possibility of open pit excavation using traditional methods, the implementation of such projects requires experience in the design of complex objects using innovative technologies.

The company GEOIZOL Project today has a rich experience and a knowledge base for the development of projects of any complexity, which can reduce the cost of solutions by optimizing the sequence of work.

The company's key customers in this area are: Adamant, LSR Group, Setl City, YIT, Pioneer, Nordic Construction Company (NCC).

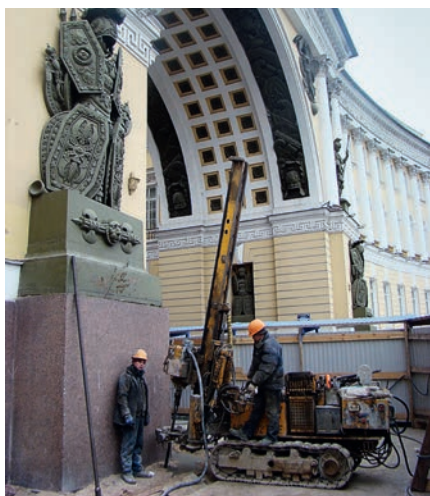


*Residential complex Lumiere with built-in and attached premises and a two-level underground parking lot. Design of the enclosing structure of the pit (depth - 6.6 m). St. Petersburg, Korpusnaya st., 9*



*Boris Eifman Dance Academy. The design of the enclosing structures of the pit (depth - 6.3 m) from tangential piles, the pile foundation from bored piles, united by a monolithic reinforced concrete grillage of variable cross-section, reinforced concrete structures of the ground floor. St. Petersburg, Liza Chaikina st., 2*





*Reconstruction and restoration of the Eastern Wing of the General Staff of the State Hermitage Museum. Project for the adaptation of basements (depth - about 5 m) for museum purposes, replanting foundations for load-bearing walls on root piles in conditions of limited space and watering of the foundation soils.*

## RESTORATION AND RECONSTRUCTION PROJECTS OF CULTURAL HERITAGE SITES

One of the main problems in buildings classified as cultural heritage sites is the destruction of foundations and decompaction of the foundation soil over time. This can cause the formation of cracks in the overground part of buildings, their destruction and final loss. The professional competencies of GEOIZOL Project specialists allow finding solutions for the preservation of foundations and strengthening of the foundation soils, as well as other underground parts of historical buildings, taking into account the characteristics of each of them and the requirements of KGIOP.

The company's key customers in this area are the State Hermitage Museum, the Tsarskoye Selo State Museum and Heritage site, and the Bolshoi Gostiny Dvor.



*Alexander Palace. The Tsarskoye Selo State Museum and Heritage site. Reconstruction, adaptation for modern use. Hanging of historical columns on the GEOIZOL-MP root piles with the addition of new foundations. St. Petersburg, Pushkin.*

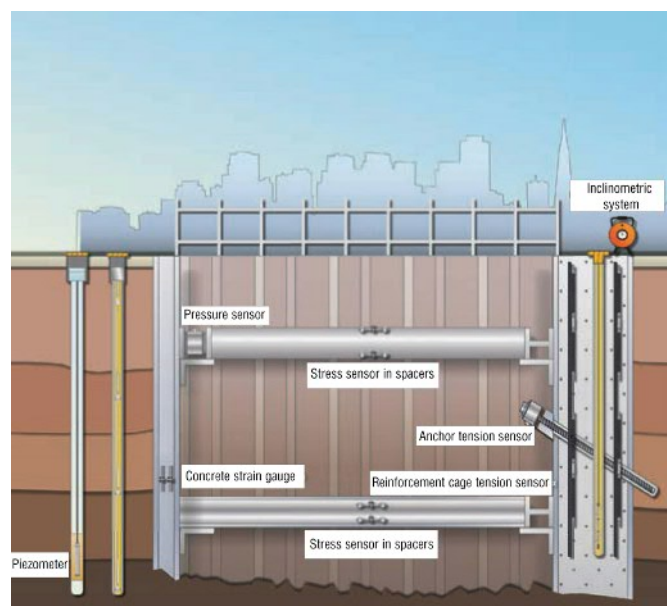
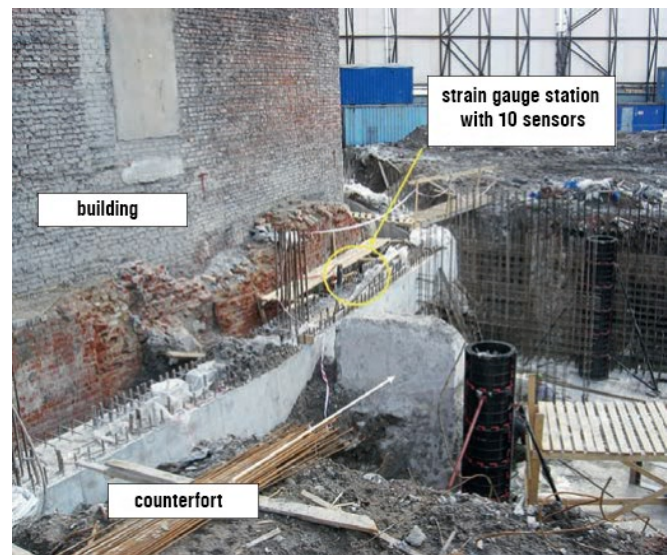


# GEOTECHNICAL MONITORING PROJECTS

By developing a geotechnical monitoring project and, accordingly, its implementation, GEOIZOL Project specialists solve the issue of ensuring the safe operation of facilities and minimizing the risks of emergencies at the construction site (deformation of load-bearing structures, impossibility of normal operation of structures and man-made disasters).

The company GEOIZOL Project has significant experience in monitoring anti-landslide structures, residential and industrial buildings, highways and railways, landslide areas.

The key customers of the company in this area are Baltic Construction Company, the State Hermitage Museum, the Tsarskoye Selo State Museum and Heritage site, the Bolshoy Gostiny Dvor.



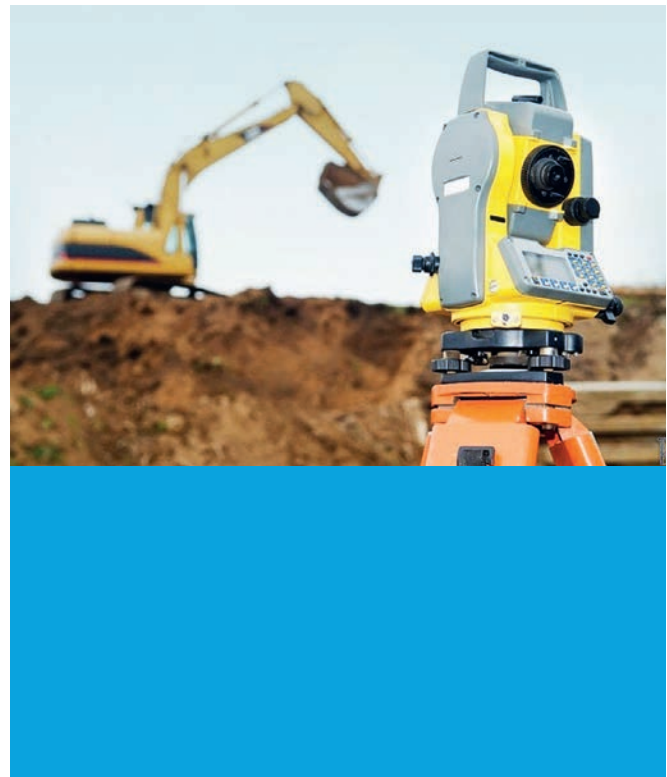


## COMPLEX ENGINEERING RESEARCHES



GEOIZOL Project performs all types of engineering researches for construction and design: geological, engineering and geodetic, engineering and hydrometeorological, environmental engineering, geotechnical engineering, as well as special types of researches. Complex approach allows to receive high-quality, comprehensive and timely information about the condition of the foundation soil on which the construction of the facility is planned.

The company's key customers in this area are: Arkhangelsk Pulp & Paper Mill, Novolipetsk Metallurgical Plant, the State Hermitage Museum.







# GEOIZOL

group of companies

The group of companies GEOIZOL is one of the leaders of the construction industry in Russia in the field of design, restoration and construction.

The history of the company began in 1995. Today GEOIZOL is a diversified holding that unites design and construction enterprises, a machine-building plant, and a mechanization department.

The group of companies employs over 1,500 employees.



**GEOIZOL**

## GEOIZOL

Transport and underground construction, reconstruction of cultural heritage sites, engineering protection of territories, geotechnical and hydrotechnical works, a range of services for the survey of buildings, geotechnical monitoring of facilities, static and stamp testing of soils.

197046, Russia, St. Petersburg, Posadskaya st., 12, Krummelhaus Business Complex  
Tel: +7 (812) 337 53 13 Fax: +7 (812) 337 53 10  
e-mail: [info@geoizol.ru](mailto:info@geoizol.ru)  
[www.geoizol.ru](http://www.geoizol.ru)



**GEOIZOL**  
project

## GEOIZOL Project

A wide range of design services: engineering protection of territories; design of underground structures, all types of foundations; geotechnical justification of construction and calculations of the enclosing structures of foundation pits; calculations to assess the impact of new construction.

197046, Russia, St. Petersburg, Posadskaya st., 12, Krummelhaus Business Complex  
Tel: +7 (921) 339-25-76 Fax: +7 (812) 416-30-28  
e-mail: [info@geoizolproject.ru](mailto:info@geoizolproject.ru)  
[www.geoizolproject.ru](http://www.geoizolproject.ru)



**GEOIZOL**  
PGS

## GEOIZOL PGS

Waterproofing of the buried part of buildings and structures during the stage of construction and operation.

197046, Russia, St. Petersburg, Posadskaya st., 12, Krummelhaus Business Complex  
Tel: +7 (812) 337-53-16 Fax: +7 (812) 337-53-10  
e-mail: [pgs@geoizol.ru](mailto:pgs@geoizol.ru)  
[www.geoizol.ru](http://www.geoizol.ru)



## Pushkin Engineering Plant

Production and supply of GEOIZOL-MP anchor systems, drilling equipment and tools, mechanical engineering units, construction metal structures, metal structures for shipbuilding and general purpose.

196600, Russia, St. Petersburg, Pushkin, Novoderevenskaya st., 17  
Tel: +7 (812) 640-79-95  
e-mail: [pmz@geoizol.ru](mailto:pmz@geoizol.ru)  
[www.pmz.ru](http://www.pmz.ru)



**UM GEOIZOL**

## UM GEOIZOL

Complex of services for mechanization of construction works. Construction machinery and special equipment.

196600, Russia, St. Petersburg, Pushkin, Novoderevenskaya st., 17  
Tel: +7 (812) 640-79-93  
e-mail: [um@geoizol.ru](mailto:um@geoizol.ru)  
[www.geoizol.ru](http://www.geoizol.ru)



# GEOIZOL

project

197046, Russia, St. Petersburg

Bolshaya Posadskaya st., 12, Krummelhaus Business Complex

Tel: +7 (921) 339-25-76, +7 (812) 416-30-28

e-mail: [info@geoizolproject.ru](mailto:info@geoizolproject.ru)

[www.geoizolproject.ru](http://www.geoizolproject.ru)